

## ***Barbara Hepworth: Sculpture for a Modern World***

**TATE BRITAIN**

**24 June – 25 October 2015**

### **TERMS OF LOANS AND CREDITS**

The attached images are on loan to you, and are accepted by you under the following terms and conditions:

- That the reproductions are accompanied by the name of the artist, the title and date of work, the owner credit line, the copyright holder and photocredit;
- That the reproductions are not cropped, overprinted, tinted or subject to any form of derogatory treatment without the prior approval of the copyright owner;
- That the images are only reproduced to illustrate an article or feature reviewing or reporting on *Barbara Hepworth: Sculpture for a Modern World* (section 30(i) and (ii) of the Copyright, Designs and Patents Act 1988);
- That any reproductions that accompany an article are not used for marketing or advertising purposes; that transparencies are returned to the Tate Press Office immediately after use
- No more than five images are reproduced to accompany any online article or online review and images are sized at a maximum of 72 dpi.

### **Front Covers**

The use of images for front covers may attract a fee and will require the prior authorisation of the owner and copyright holder of the work. Please contact Tate Press Office for such use.

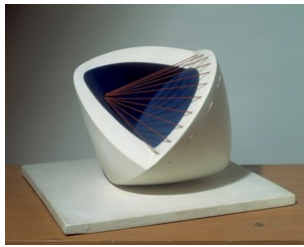
Please also contact Tate Press Office if you have any queries about the orientation of images:

Call **+44 (0)20 7887 8730/32/4939** | email: **pressoffice@tate.org.uk**



Barbara Hepworth  
*Curved Form (Delphi)*, 1955

Sculpture  
Guarea wood, part painted, with strings  
1067 x 787 x 813 mm  
Ulster Museum, Belfast  
© The Hepworth Estate



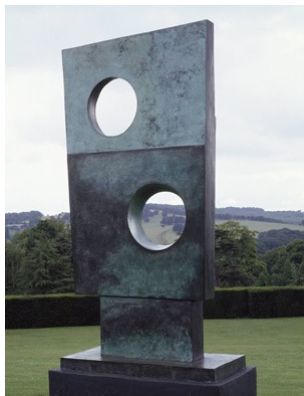
Barbara Hepworth  
*Sculpture with Colour (Deep Blue and Red) (6)*, 1943

Sculpture  
Painted wood with strings, 406 mm  
Courtesy Bowness, Hepworth Estate  
© The Hepworth Estate



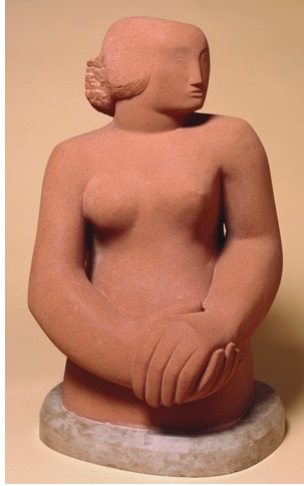
Barbara Hepworth  
*Two Forms*, 1938

Sculpture  
Honduras mahogany  
Private collection, London  
© The Hepworth Estate



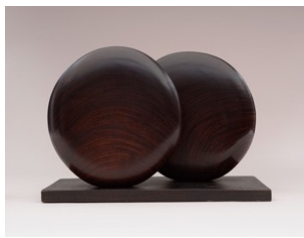
Barbara Hepworth  
*Squares with Two Circles*, 1963

Sculpture  
Bronze, 3061 x 1372 x 318 mm  
Tate  
© The Hepworth Estate



Barbara Hepworth  
*Figure of a Woman*, 1929-30

Sculpture  
Corsehill stone, 533 x 305 x 279 mm  
Tate  
© Bowness, Hepworth Estate



Barbara Hepworth  
*Discs in Echelon*, 1935

Sculpture  
Padouk wood, 311 x 491 x 225 mm  
Museum of Modern Art, New York  
© Bowness, Hepworth Estate



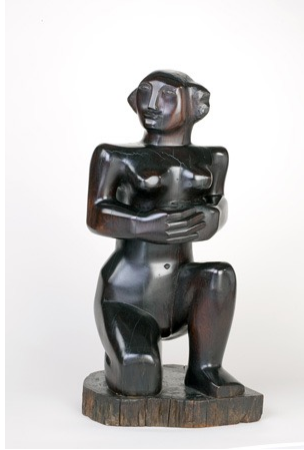
Barbara Hepworth  
*Form*, 1936

Sculpture  
White marble  
Private collection  
© Bowness, Hepworth Estate



Barbara Hepworth  
*Large and Small Form*, 1934

Sculpture  
White alabaster, 250 x 450 x 240 mm  
Courtesy of the Pier Arts Centre  
© Bowness, Hepworth Estate



Barbara Hepworth  
*Kneeling Figure*, 1932

Sculpture  
Rosewood, 675 x 320 x 288 mm  
The Hepworth Wakefield  
© Bowness, Hepworth Estate



*Barbara Hepworth in the Palais studio in with unfinished wood carving Hollow Form with White Interior*, 1963

Photograph: Val Wilmer  
Courtesy © Bowness, Hepworth Estate