

# GUGGENHEIM BILBAO

Images for the use of the Press  
*Picasso Sculptor. Matter and Body*  
Guggenheim Bilbao Museoa

## Online press image service

In the press section of the Museum's website ([prensa.guggenheim-bilbao.eus](http://prensa.guggenheim-bilbao.eus)), registered users can download high-resolution images and videos of both the exhibitions and the building. If you have not yet opened an account, you can register and download the required material.

If you are already a user, introduce your username and password and access the image downloading facility directly.

- The images provided must be used only for editorial publicity related to the exhibition *Picasso Sculptor. Matter and Body*, open to the public from September 29, 2023, to January 14, 2024.
- They must be reproduced in their entirety, with no cropping, superimposition or manipulation. The reproductions must be accompanied by the name of the artist, the title and date of the work, its proprietor, the copyright holder, and the photographic credit.
- Images published online must be protected by appropriate electronic security measures.
- Any image may have a maximum resolution of 1000 pixels on the longest side. In online publication, the file must be embedded and non-downloadable.
- The images may not be transferred to a third party or a database.
- The use of images for covers may incur a charge and will require prior authorization from the owner and copyright holder of the work.

For further information, the Press Department of the Guggenheim Museum Bilbao can be contacted by phone (+34 944 359 008) or email ([media@guggenheim-bilbao.eus](mailto:media@guggenheim-bilbao.eus)).

Pablo Picasso

*Woman with Vase*, Boisgeloup, summer 1933

Bronze, cast in 1972 or 1973

220 × 122 × 110 cm

Museo Nacional Centro de Arte Reina Sofía, Madrid. Gift of Pablo Picasso

Picasso DE00051

© Sucesión Pablo Picasso, VEGAP, Madrid, 2023



# GUGGENHEIM BILBAO

Pablo Picasso

*Figure: Project for a Monument to Guillaume Apollinaire*, 1928

Iron wire and sheet metal

59.5 × 13 × 32 cm

Musée national Picasso-Paris. Dation Pablo Picasso, 1979. MP265

© Sucesión Pablo Picasso, VEGAP, Madrid, 2023

Photo © RMN-Grand Palais (Musée national Picasso-Paris) / Adrien Didierjean



Pablo Picasso

*Head of a Woman*, Paris, 1929–30

Iron, sheet metal, springs, and metal colanders; all painted in white

100 × 37 × 59 cm

Musée national Picasso-Paris. Dation Pablo Picasso, 1979 MP270

Foto © RMN-Grand Palais (Musée national Picasso-Paris) / Mathieu Rabeau

© Sucesión Pablo Picasso, VEGAP, Madrid, 2023



Pablo Picasso

*Head of a Woman*, April–July 1937 [original in plaster made in Boisgeloup in 1931]

Cement, unique edition

142 × 54.5 × 62.5 cm

Musée Picasso, Antibes

Gift of the artist, 1954

© Sucesión Pablo Picasso, VEGAP, Madrid, 2023



Pablo Picasso

*Bather*, Boisgeloup, 1931

Plaster and wood

72 × 41 × 34.5 cm

Private collection

© Sucesión Pablo Picasso, VEGAP, Madrid, 2023



Pablo Picasso

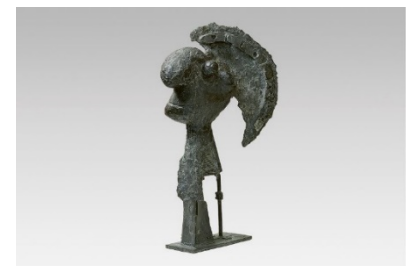
*Head of a Warrior*, Boisgeloup, January 1, 1933

Bronze with patina

121 × 69 × 32 cm

Fundación Almine y Bernard Ruiz-Picasso, Madrid. On temporary loan to the Museo Picasso Málaga

© Sucesión Pablo Picasso, VEGAP, Madrid, 2023



# GUGGENHEIM BILBAO

Pablo Picasso

*Head of a Woman (Dora Maar)*, 1941

Bronze

80 x 40 x 55 cm

Fondation Beyeler, Riehen/Basel, Sammlung Beyeler

© Sucesión Pablo Picasso, VEGAP, Madrid, 2023

Photo: Peter Schibli



Pablo Picasso

*Pregnant Woman (second state)*, Vallauris, 1950/1959

Plaster and shellac

111 x 32.5 x 34.5 cm

Private collection

© Sucesión Pablo Picasso, VEGAP, Madrid, 2023

Photo: Robert Mackeever



Pablo Picasso

*Little Girl Jumping Rope*, Vallauris, 1950

Bronze

153 x 62 x 65 cm

Private collection

© Sucesión Pablo Picasso, VEGAP, Madrid, 2023



Pablo Picasso

*Sylvette*, Vallauris, 1954

Cut and folded sheet metal, painted on both sides

69.9 x 47 x 7.6 cm

Fondation Hubert Looser, Zurich

© Sucesión Pablo Picasso, VEGAP, Madrid, 2023

Photo © Fondation Hubert Looser, Zurich



Pablo Picasso

*The Bathers*, Cannes, summer 1956

Bronze

Six sculptures, dimensions vary

Musée national Picasso-Paris, Dation Pablo Picasso, 1979,

n°. inv.: MP352-357

© Sucesión Pablo Picasso, VEGAP, Madrid, 2023

Photo © RMN-Grand Palais (Musée national Picasso-Paris) / Mathieu Rabeau



# GUGGENHEIM BILBAO

Pablo Picasso

*Head of a Woman*, Mougins, late 1962

Cut, folded, and polychromed sheet metal and iron wire

32 × 24 × 16 cm

Musée national Picasso-Paris. Dation Pablo Picasso, 1979

© Sucesión Pablo Picasso, VEGAP, Madrid, 2023

Photo © RMN-Grand Palais (Musée national Picasso-Paris) / Adrien

Didierjean/Mathieu Rabeau

